



| | |
|--|--|
| • Answer all the following questions | • Duration: 3 Hours (for the two pages) |
| • Illustrate your answers with sketches when necessary | • No of questions in the first page: 3 |
| • Assume any missing data | • Total Marks: 70 Marks (for the two pages) |

1. A Define each of the following:

- iii. Geothermal Gradient.
- vi. Batholith.
- ii. Cleavage.
- v. DRM
- i. Mineral
- iv. Fault.

1. B Compare between each pair of the following:

- i. Disconformity and nonconformity.
- ii. Cross bedding and graded bedding.
- iii. Quiet volcanos and explosive volcanos.
- iv. Basic and acidic igneous rocks.

1. C Show how to differentiate between each pair of the following:

- i. Azurite and chlorite.
- ii. Albite and orthoclase.
- iii. Calcite and quartz.
- iv. Calcite and dolomite

(10 marks)

2. A Describe any four of the following minerals:

- i. Albite.
- iv. Galina.
- ii. Halite.
- v. Rock – Salt
- iii. Hematite.
- vi. Augite.

2. B. What is the economic importance of the following?

- i. Sedimentary rocks.
- ii. Apatite.
- iii. Flourspar.
- iv. Underground water.

2. C. What is the geologic significance of the following?

- i. Graded bedding
- ii. Cross – bedding
- iii. Mudcracks

(10 marks)

3. A Describe any four of the following rocks:

- i. Limestone
- iv. Gabbro.
- ii. Basalt
- v. Quartzite
- iii. Arkose
- vi. Shale

3. B. i. Show how orthoclase can be weathered chemically.

- ii. Compare between arch dam and gravity dam.
- iii. Discuss characteristics of an artesian water.

3. C. i. Give evidences for crustal deformation.

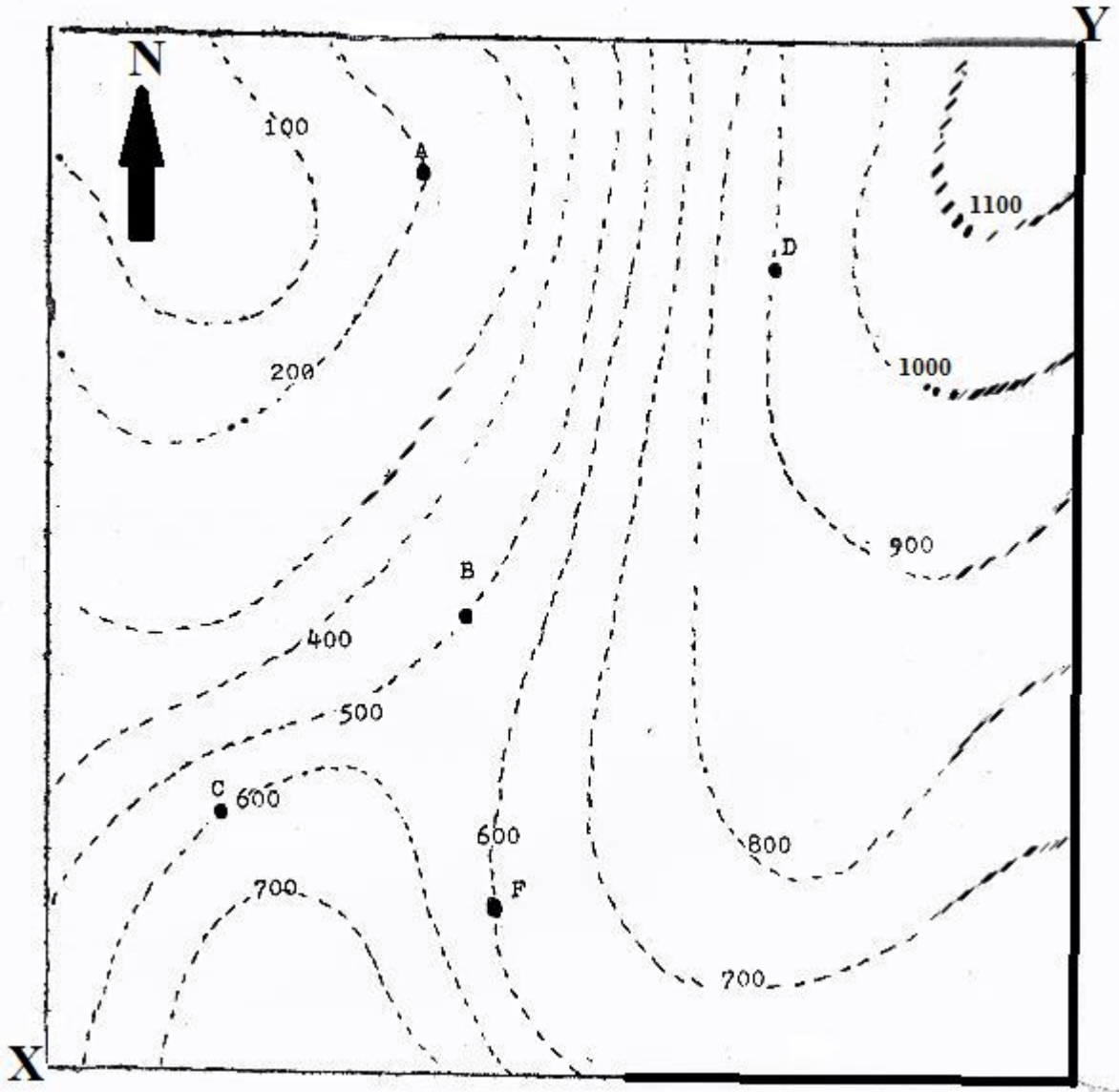
- ii. Show why study of metamorphic rooks is difficult.
- iii. Discuss selection of dam site.

(20 marks)

4. Solve the given geologic map. **(30 Marks)**



| | |
|--|--|
| • Answer all the following questions | • Duration: 3 Hours (for the two pages) |
| • Illustrate your answers with sketches when necessary | • No of questions in the first page: 3 |
| • Assume any missing data | • Total Marks: 70 Marks (for the two pages) |



Scale 1:5000

Contour in meters

A thin seam of coal is outcropping on surface at stations A, B and C, it is required to:

- Calculate the amount and direction of the true dip.
- Draw the outcrop of the seam.
- Calculate the apparent dip in the direction 45 degrees N – E.
- What is the depth to the drilled at points D and F to reach the coal seam.
- Draw a geologic section in the direction X-Y.